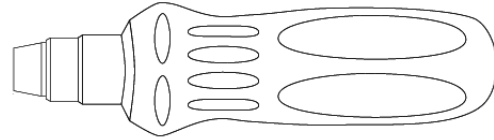
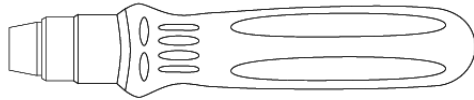


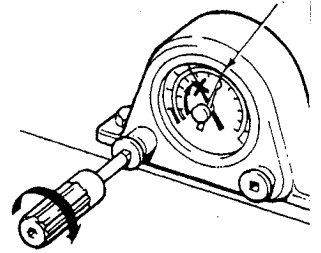
PSE (Internally Preset Screwdriver) Operating Instructions

Rev 1.1



Calibrating Torque Screwdrivers

To calibrate torque screwdrivers either use a torque analyzer or torque transducer within the range of the torque screwdriver. For torque screwdrivers calibrate torque in "Peak" mode with an analyzer or transducer. Make sure to apply the torque slowly and smoothly.

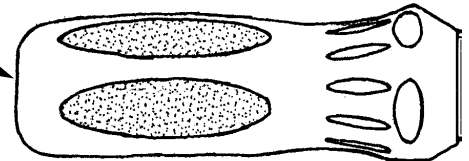


1. Select a torque analyzer or transducer that covers the torque range of the PSE screwdriver. Connect screwdriver to the torque analyzer or transducer using the appropriate adapters as needed.
2. Apply torque clockwise slowly until screwdriver 'slips' and note reading.
3. Adjust screwdriver to required torque setting as described below.
4. Test and repeat adjustment as necessary to obtain desired value.
5. Recalibrate torque screwdriver at prescribed intervals.

Adjusting Torque Setting (During Calibration)

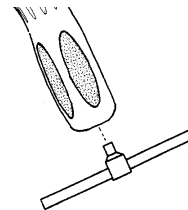
1. Insert hex key into hole located at end of rubber grip. (Note do-not attempt to remove rubber grip from the tool).
2. Turn hex key clockwise to increase torque and counter clockwise to decrease torque. Do not adjust torque above or below the recommended torque ranges of the tool.
3. Seal End Hole with Black RTV Sealant.

Insert hex key



PSE1350 is supplied with a T-Bar

1. Snap T-Bar into the slot located in the grip.



Applying Torque

1. Tighten nut or bolt by applying steady twists. Screwdriver should be kept at 90 degrees to axis of bolt during tightening. When pre-set torque is reached, the screwdriver will 'slip.'
2. The screwdriver will automatically reset itself for the next application.
3. With its unique cam-over design, it's impossible to over tighten beyond the preset load.



mountz
the torque tool specialists.

800-456-1828
Fax: 408-292-2214

sales@etorque.com

www.etorque.com



ISO 9001